

GL30MG

LTE Cat M1/NB2 Micro Waterproof Real-Time Asset Tracker



- LTE CAT M1/NB2 Fallback 2G
- BLE 5.2
- Wi-Fi Scan (Location)
- Neighbor Cell Info Report (Location)
- Function Button
- Internal Buzzer
- Up to 10,000 Buffer Messages
- Motion Detection
- Low Power Alarm
- Battery Level Report
- Supports OTA Update

Wi-Fi Scan

LTE Cat M1 / NB2

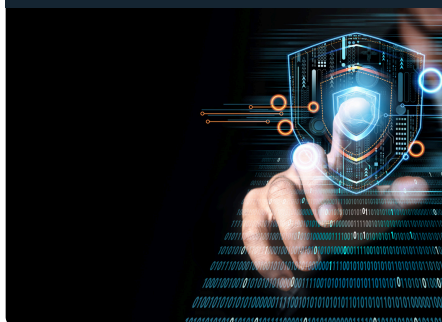
BLE 5.2

The device is a micro size real-time tracker with LTE Cat M1/NB2 and 2G fallback. It is used for a wide range of applications which require real-time location knowledge, such as personal safety, animal management, asset monitoring, package delivery.

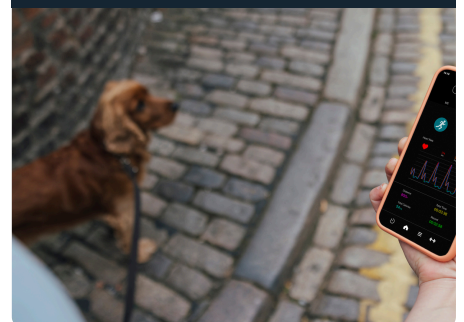
Asset Monitoring

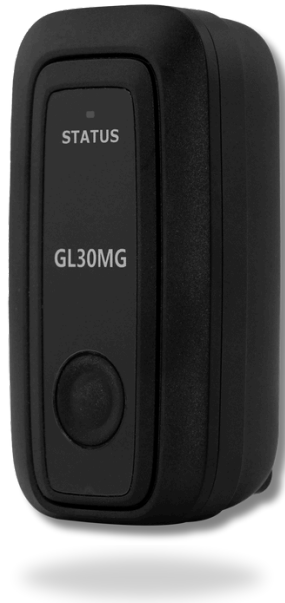


Personal Safety



Pet Tracking





Dimensions	60x31.7x19.66 mm 2.36x1.25x0.77 inch
Weight	37.6g (1.33oz)
Internal Battery	Li-Polymer 650mAh (Rechargeable Battery)
Standby Time	Continue Mode 5 Min Reporting: 3 days 10 Min Reporting: 5 days Power Saving Mode 1 Report per Hour: 15 days 1 Report per Day: 170 days ** eMTC, UDP, Internal GNSS, WIFI & BLE off GPS open sky, LTE Cat M1/NB2 CSQ>15, operation temperature 10°C~25°C
Charging Voltage	5V DC
Waterproof	IP67 compliant
Operating Temperature	-20°C ~ +60°C -20°C ~ +60°C for storage
Buffer Messages	UP to 10,000 buffer messages
BLE	Support BLE 5.2 protocol
Wi-Fi	Support Wi-Fi Scan (Location)
Sensor	Built-in 3-axis Accelerometer
Certification	FCC, PTCRB, AT&T, T-Mobile, Verizon(Planning)
Region	US

LTE

Frequency	Cat M1: LTE FDD:B2/B4/B12/B13/B66 Cat NB2: LTE FDD:B2/B4/B12/B13/B66
Data Transmission	eMTC (DL) 588kbps eMTC (UL) 1119kbps NB2 (DL) 127kbps NB2 (UL) 158.5kbps NB1 (DL) 34kbps NB1 (UL) 66.6kbps

EGPRS Specifications

Frequency	EGPRS 850/1900MHz
Data Transmission	EDGE (DL) 296 Kbps (UL) 236.8 Kbps GPRS (DL) 107 Kbps (UL) 85.6 Kbps

GNSS

GNSS type	All-in-One receiver
Constellation Support	GPS, Glonass, Galileo, Beidou
Sensitivity	Autonomous: -148 dBm Hot start: -163 dBm Tracking: -165 dBm
Position Accuracy (CEP)	Autonomous: < 2.0m
TTFF (Open Sky)	Cold start: 24s average Hot start: 1s average

Interface

LTE Antenna	Internal only
GNSS Antenna	Internal only
BLE Antenna	Internal only
Wi-Fi Antenna	Internal only
LED Indicator	One RGB LED (CELL, Power, GNSS)
Function Button	One activation/alarm Key
I/O Interface	5pin magnetic suction interface 2pin for charging 3pin for I/O (can be used for Download and Debug)
Buzzer	Metal Patch Buzzer
SIM	eSIM chip (MFF2 ESIM)

Air Interface Protocol

Transmission Protocol	TCP, UDP, SMS
Low Power Alarm	Alarm when internal battery is low
Power On/Off Report	Report when the device is powered on and off
SOS Alarm	SOS alarm via pressing function key
Command Set	@Track protocol command
Working Modes	Power saving mode for long standby time Continuous mode for emergency tracking
Scheduled Timing Report	Report messages at preset time intervals
Geo-Fence Report	Support up to 20 internal geo-fence regions Automatically reports when entering / exiting Geo-Fence
Motion Detection	Motion alarm based on internal 3-axis accelerometer
OTA Support	Remote configure parameters to change position interval, measurement interval, active/ deactivate sensor, upgrade FW



Connectivity

Model	BLE
Type	2.4GHz
Model	Wi-Fi
Type	2.4GHz
Remark	Wi-Fi scanning for in-door positioning or triggering mode switch